



3-pole, 10 A 0-1

Technical data

Ex-Main current switches 10 A

Marking accd. to 2014/34/EU	Ⓔ II 2 G Ex de IIC T6 / Ⓔ II 2 D Ex tD A21 IP66 T80 °C	
EC-Type Examination Certificate	PTB 00 ATEX 1074	
IECEX Certificate of Conformity	BK1 07.0014	
Marking accd. to IECEx	Ex ed IIC T6 Ex tD A21 IP66 T53 °C	
Permissible ambient temperature	-20 °C up to +40 °C ¹⁾	
Rated voltage	up to max. 500 V	
Rated current	max. 10 A	
Frequency	50/60 Hz	
Rated making/breaking capacity AC-3 accd. EN 60947-3	U _e 230 V / I _e 10 A U _e 400 V / I _e 10 A U _e 500 V / I _e 10 A	
Back-up fuse	up to 400 V AC: 10 A gG up to 500 V AC: 10 A gG	
Connecting terminals	main contact	2 x 1.5 - 2.5 mm ²
	auxiliary/signal contact	2 x 0.5 - 2.5 mm ²
Protection class	I	
Degree of protection accd. to EN 60529	IP66	
Cable glands/enclosure drilling	M25 cable gland see ordering details	
Weight	approx. 0.60 kg	
Enclosure material	impact resistant polyamide	
Enclosure colour	black	
Padlocking facility	can be locked in OFF position with 3 commercially available padlocks (Ø max. 6 mm)	

¹⁾ Other ambient temperatures on request

GHG 261 - Ex-main current switches 10 A



3-pole, 10 A 0-I

Ordering details

Content	Cable gland	Order No.
Ex-Main current switches 10 A		
3-pole 0-I	2 x M25	ON-OFF switch

Customized version on request

Accessories

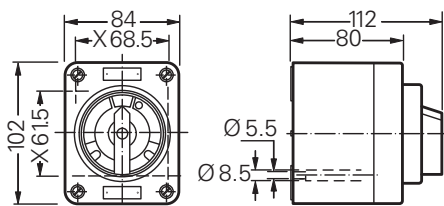
Type	Application	Fixing method	Order No.
Mounting plate for Ex-Main current switches 10 A 3-pole			
Size 1	Wall mounting	screwless mounting	GHG 610 1953 R0101
Size 1	Pipe clamp	screwless mounting	GHG 610 1953 R0102
Size 1	Trellis-work mounting	screwless mounting	GHG 610 1953 R0103

Type	Application	OU	Order No.
Accessories for mounting plates			
Label holder with type label (blank) for mounting plate size 1, 2, 2A and 3		10	GHG 610 1953 R0057
Mounting set for pipes 1" (of 27 - 30 mm) for mounting plates with pipe fixing		10	GHG 610 1953 R0020

Type	Application	OU	Order No.
Protective canopy for mounting plate			
Size 1	for mounting plate size 1	1	GHG 610 1955 R0101

Please pay attention that only order units (OU) according to the ordering details can be delivered.

Dimension drawing



3-pole, 10 A 0-I

X = fixing dimensions